

MMS

M E T A L S H A D E S

# ABOUT US

We craft luxurious, bespoke designs using high-quality Metal and Wood, blending modern aesthetics with skilled craftsmanship. Our expertise lies in precision metal coating and custom-made products tailored to each client's vision. From concept to completion, we focus on durability, fine finishes, and timeless design. Based in Delhi, we serve clients across India and worldwide with reliable service and attention to detail.



# STATEMENT PIECES

Designed with a focus on proportion, materiality, and craftsmanship, our furniture collection brings together functionality and timeless design. Each piece is meticulously crafted to create a lasting presence within contemporary interiors.

# **EMOTIONAL SURFACES | WALL COLLECTION**

A carefully chosen selection of ornamental metal wall finishes called Emotional Surfaces was created to improve interior areas.

Every finish is expertly created to give architectural surfaces depth, texture, and tonal richness. These metal finishes are made for attention-grabbing walls and turn simple vertical planes into elegant architectural features.

Emotional Surfaces, in contrast to traditional surface treatments, produce a dynamic interplay with light that gives the room character, warmth, and vigor.

This collection enables walls to become a distinctive element of the overall design, making it perfect for residential, hotel, and commercial environments.



## **EL ESTRATO**

### Architectural Metal Finish

EL ESTRATO is a decorative architectural wall panel crafted from brass. The surface features layered, flowing contour patterns that are sculpted into the metal to create depth and movement. Finished with a hand-brushed technique, it reflects light beautifully and adds warmth and texture to interior spaces. Ideal for feature walls in residential, hospitality, and commercial projects.



# EL ESTRATO | ARCHITECTURAL METAL FINISH

## Technical Information

### Details

---

#### Design Feature

- Sculptural, flowing contour pattern inspired by organic topography
- Continuous layered grooves creating a 3D wave effect
- Seamless visual movement across the panel
- Statement design that adds depth and architectural interest

#### Material Specification

- High-grade metal panel (brass or brass-finished aluminium/steel base)
- Precision CNC-crafted or hand-finished surface detailing
- Durable, corrosion-resistant coating suitable for interiors
- Solid, sturdy construction for long-term use

#### Purpose

- Decorative feature wall for luxury interiors
- Ideal for lobbies, reception areas, living rooms, hotels, showrooms, or premium commercial spaces
- Designed to elevate interiors with a modern luxury aesthetic

### Pricing

---

INR	USD
0	0

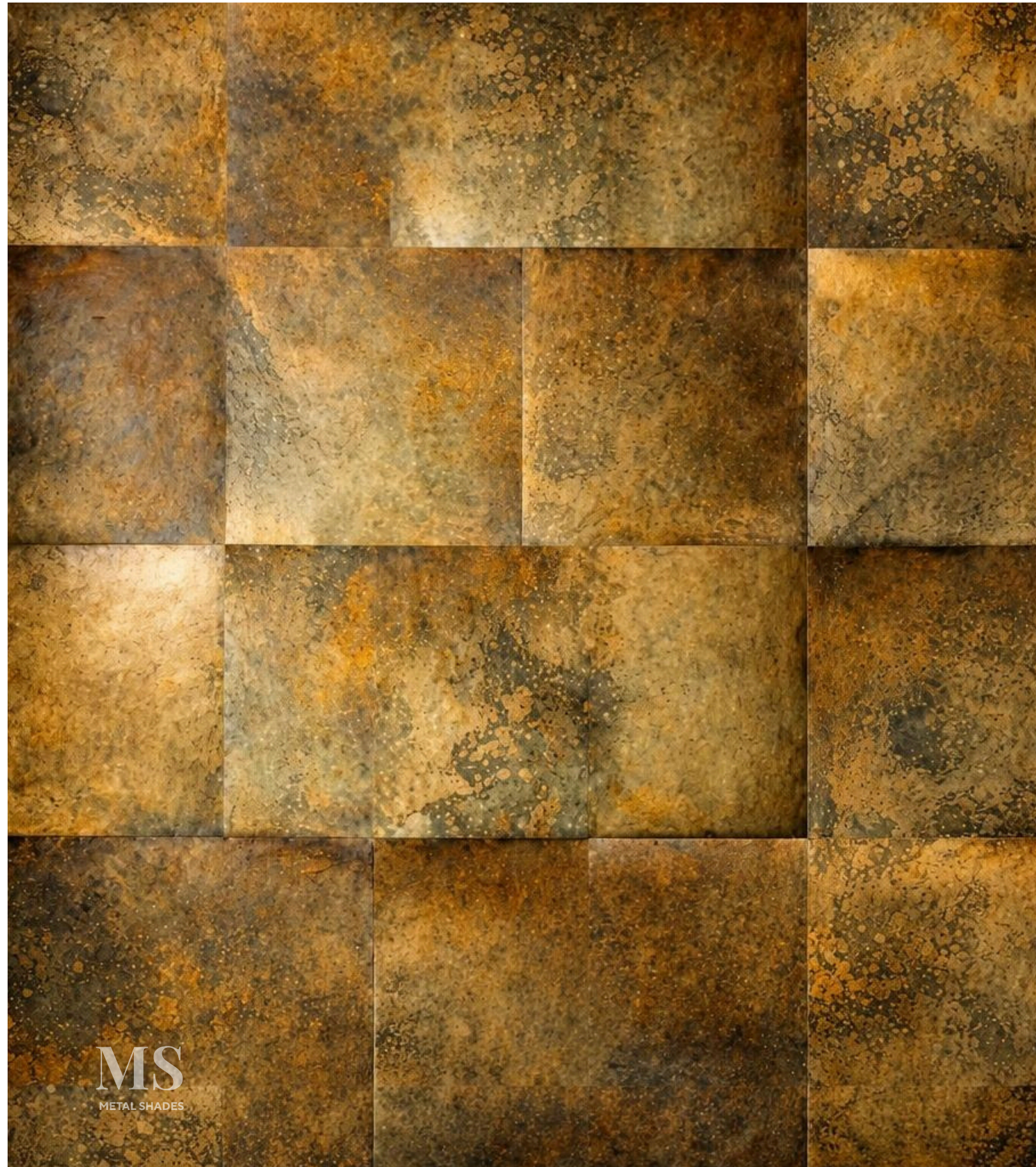
# EL ESTRATO | ARCHITECTURAL METAL FINISH

## Materials and Finishes

### Metal Finishes

---

- Warm antique brass / bronze-toned metallic finish
- Soft satin sheen with subtle light reflections
- Hand-brushed look that enhances depth and texture
- Premium, luxury surface appearance



## **ACCENTO**

A Statement in Patina

A sculpted architectural metal installation defined by structured geometric forms and a richly layered handcrafted patina. Each panel undergoes an intensive finishing process to achieve depth, tonal variation, and an authentic aged-metal character. The interplay of light and shadow across its dimensional surface transforms walls into refined design statements, making it ideal for luxury residences, hospitality spaces, and high-end commercial environments.



# ACCENTO | A STATEMENT IN PATINA

## Technical Information

### Details

---

#### Design Feature

- Modular square-panel composition forming a rhythmic surface
- Organic patina movement with depth and layered visual interest
- Seamless grid layout suitable for large-scale applications
- Timeless aesthetic blending contemporary design with classic craftsmanship

#### Material Specification

- Premium-grade metal sheets (brass / copper-based substrate)
- Hand-treated patina developed through controlled chemical processes
- Protective sealant coating for durability and finish stability
- Suitable for vertical interior architectural applications

#### Purpose

- Feature walls for luxury residences and commercial interiors
- Ideal for double-height elevations, lobbies, reception areas, and statement zones
- Designed to transform spaces into an immersive architectural experience

### Pricing

---

INR	USD
0	0

# ACCENTO | A STATEMENT IN PATINA

## Materials and Finishes

### Metal Finishes

---

- Hand-applied patina finish with rich bronze, antique gold, and oxidized undertones
- Matte to low-sheen surface with natural tonal variations
- Unique aged texture developed through multi-stage patination
- Each panel carries a distinct, artisanal character



## **VERTICAL PANEL WALL**

A contemporary architectural wall installation composed of vertically aligned, hand-finished metal panels in carefully curated metallic tones. The staggered arrangement enhances visual height while creating depth through subtle variations in texture and reflectivity.

# VERTICAL PANEL WALL

## Technical Information

### Details

---

#### Design Feature

- Vertical rectangular metal panels arranged in an asymmetric composition
- Layered pattern creating a sense of height and architectural rhythm
- Seamless integration for large-scale and double-height applications
- Elegant interplay of light and shadow across the surface
- 

#### Material Specification

- Premium-grade metal panels with precision-fabricated edges
- Hand-finished surface treatment for consistent quality
- Durable protective coating suitable for interior environments

#### Purpose

- Feature wall designed for luxury residential and commercial interiors
- Ideal for lobbies, double-height living spaces, hotels, and premium projects

### Pricing

---

INR	USD
0	0

# VERTICAL PANEL WALL

## Materials and Finishes

### Metal Finishes

---

- Multi-toned metallic finish in shades of antique gold, bronze, and soft charcoal
- Subtle patina effect with a satin to matte surface sheen
- Natural tonal variations adding richness and depth



## **DIAMOND PATTERN WALL**

A striking architectural wall installation composed of angular, hand-finished metal panels arranged in a bold diamond- inspired pattern. The varied metallic tones and faceted surfaces create dynamic depth and a dramatic interplay of light and shadow. Designed as a statement feature, it brings contemporary luxury and artistic character to residential, hospitality, and commercial interiors.

# DIAMOND PATTERN WALL

## Technical Information

### Details

---

#### Design Feature

- Faceted geometric composition formed with triangular and angular metal panels
- Dynamic arrangement creating a sculptural, three-dimensional effect
- Strong play of light and shadow across intersecting planes
- Bold architectural statement suitable for large-scale walls

#### Material Specification

- High-grade metal panels precision-cut into geometric forms
- Hand-finished patina surface treatment
- Protective clear coating for durability and finish stability
- Engineered for interior vertical applications

#### Purpose

- Feature wall for luxury residential and commercial interiors
- Ideal for lobbies, double-height spaces, hotels, and statement areas
- Adds drama, depth, and architectural character to the space

### Pricing

---

INR	USD
0	0

# DIAMOND PATTERN WALL

## Materials and Finishes

### Metal Finishes

---

- Multi-shade metallic finish with tones of antique gold, bronze, charcoal, and soft silver
- Hand-applied patina creating natural depth and tonal variation
- Matte to satin surface enhancing the geometric facets



## **MODERN SCULPTED METAL WALL**

A sculpted metal feature wall engineered for double-height interiors, designed as a vertical architectural installation for large-scale wall surfaces. Manufactured using precision-formed metal panels, it provides structural visual depth, surface texture, and controlled light reflection, making it suitable for high-end residential and commercial applications.

# MODERN SCULPTED METAL WALL

## Technical Information

### Details

---

#### Design Feature

- Large-scale sculptural wall panel installation
- Flowing, wave-like 3D relief pattern creating movement and depth
- Seamless panel alignment forming one continuous artwork across multiple vertical sections
- Integrated concealed uplighting at the base highlighting texture and contours
- Double-height installation acting as a focal feature wall for the lobby

#### Material Specification

- Base panels: CNC-cut MDF, plywood, or aluminum composite panels
- Sculpted surface: cast resin, thermoformed acrylic, carved wood, or molded gypsum
- Finish layer: metal leaf, PVD coating, metallic paint system, or brushed metal laminate
- Mounting system: concealed metal framing or rail support system
- Lighting: warm LED linear strip (approx. 2700–3000K)

#### Purpose

- Acts as a statement architectural art wall
- Enhances luxury and visual impact of entrance space
- Adds acoustic diffusion by breaking up flat reflective surfaces

### Pricing

---

INR	USD
0	0

# MODERN SCULPTED METAL WALL

## Materials and Finishes

### Metal Finishes

---

- Metallic brushed finish with a warm bronze/gold tone
- Subtle reflective sheen that enhances lighting effects
- Likely clear-coated or lacquer-sealed to prevent oxidation and fingerprints
- Matte-satin balance rather than mirror polish to avoid glare in interior lighting



## **BRASS WALL ART INSTALLATION**

A large-scale decorative wall artwork made from handcrafted brass blocks, designed for double-storey or high-ceiling spaces. The layered metal surface reflects light beautifully, adding depth, texture, and a luxurious architectural statement to interior walls.



- Hammered Texture
- Warm Brass Tone
- Natural Patina
- Matte-Gloss Contrast

# BRASS WALL ART INSTALLATION

## Technical Information

### Details

---

#### Design Feature

- Sculptural wall installation composed of small modular metal elements
- Pixelated, stepped silhouette forming a striking vertical composition
- Layered surface creating depth and visual movement
- Designed for large-scale and double-height architectural walls

#### Material Specification

- High-quality metal tiles individually crafted and assembled
- Hand-finished patina developed through controlled artisanal processes
- Protective clear coating for durability and long-term finish stability
- Suitable for interior vertical installations

#### Purpose

- Statement feature wall for luxury residential and commercial interiors
- Ideal for lobbies, atriums, galleries, and double-height spaces
- Acts as a bold artistic focal point enhancing spatial experience

### Pricing

---

INR	USD
0	0

# BRASS WALL ART INSTALLATION

## Materials and Finishes

### Metal Finishes

---

- Rich gold-toned metallic finish with hand-applied patina
- Subtle hammered texture creating soft light reflections
- Warm, luminous surface with natural tonal variation



## **SCULPTED METAL WALL**

A high-end lobby interior visualization featuring a double-height metallic feature wall with sculptural ribbon detailing, illuminated by warm accent lighting. The space includes a mezzanine with glass balustrades, a modern staircase, and a coordinated seating arrangement, showcasing a refined contemporary design concept intended for architectural presentation and client visualization.

# SCULPTED METAL WALL

## Technical Information

### Details

---

#### Design Feature

- Double-height sculptural feature wall installation
- Intersecting flowing linear relief pattern creating movement
- Integrated base uplighting enhancing texture and depth
- Seamless panel layout forming a continuous artistic surface

#### Material Specification

- Base panels: MDF, aluminum composite panel, or metal sheet backing
- Relief pattern: molded resin, cast metal, or CNC-carved board
- Finish: metallic paint system, metal leaf, or PVD coating
- Lighting: concealed warm LED strip system

#### Purpose

- Serves as a grand focal statement wall
- Enhances spatial height and luxury ambience
- Adds texture, light reflection, and visual drama
- Defines lobby or lounge identity through architectural art

### Pricing

---

INR	USD
0	0

# SCULPTED METAL WALL

## Materials and Finishes

### Metal Finishes

---

- Metallic bronze/gold wall panels with satin reflective finish
- Highlighted sculptural lines with polished metallic accents
- Protective clear coat to maintain sheen and durability



## **ZEPHYR WINGS**

Zephyr Wings is a luxury kinetic sculpture featuring five independently pivoting tiers of brass and bronze alloy that respond gracefully to natural air currents. Each wing is meticulously hand-hammered to catch and softly diffuse light, showcasing a sophisticated gradient patina that transitions from radiant brushed brass to deep oxidized bronze. Perfectly blending mid-century biomorphic design with modern architectural precision, this statement piece introduces fluid elegance and artisanal texture to high-end spaces.



MS  
METAL SHADES



MS  
METAL SHADES

# ZEPHYR WINGS

## Technical Information

### Details

---

#### Design Features

- Kinetic Stacking: Five elongated, wing-like metal panels linked vertically to pivot independently.
- Biomorphic Silhouette: Mid-century modernist aesthetic blending organic curves with sharp, tapered edges.
- Textural Contrast: Deeply faceted surfaces designed to catch light and shadow during rotation.

#### Material Specification

- Body: Rigid sheets of brass or bronze alloy, balanced for durability and lightweight suspension.
- Hardware: Heavy-duty matching metal loops and S-hooks, anchored by a discreet top steel cable.

#### Purpose

- Aesthetic Focus: Serves as a statement art piece for luxury residential, hospitality, or gallery spaces.
- Ambient Motion: Responds to natural air currents to introduce fluid, calming movement to a room.
- Light Diffusion: Acts as a passive reflector, softly scattering ambient and directional light.
- Crafted as a sophisticated, minimalist focal point for upscale residential and hospitality interiors.

### Pricing

---

INR	USD
0	0

# ZEPHYR WINGS

## Materials and Finishes

### Metal Finishes

---

- Artisanal Texture: Dense, hand-hammered stippling that eliminates flat, reflective glare.
- Gradient Patina: A mix of bright brushed brass on the outer tiers and dark oxidized bronze in the center.
- Protection: Coated in a low-sheen matte lacquer to seal the patina and prevent tarnishing.



**MS**  
METAL SHADES

## **AETHER BONSAI**

Aether Bonsai is a sculptural metal art piece inspired by the timeless elegance of bonsai artistry, reimagined through a contemporary architectural form. Its fluid metallic composition and refined reflective finish create a striking balance between minimalism and luxury. Designed to function as both décor and statement art, the piece brings depth, sophistication, and a serene visual presence to modern interiors and curated spaces.



**MS**  
METAL SHADES



**MS**  
METAL SHADES

# AETHER BONSAI

## Technical Information

### Details

---

#### Design Features

- Sculptural bonsai-inspired metal artwork
- Organic form with minimalist architectural aesthetics
- Reflective metallic structure with a light, airy visual presence

#### Material Specification

- Handcrafted premium-grade metal construction
- Precision-shaped tubular metal framework
- Solid base with textured detailing

#### Purpose

- Luxury decorative centerpiece for modern interiors
- Ideal for consoles, coffee tables, and reception spaces
- Functions as both a statement décor piece and collectible art object

### Pricing

---

INR	USD
0	0

# AETHER BONSAI

## Materials and Finishes

### Metal Finishes

---

- Mirror Polish Stainless Steel
- Champagne Gold
- Brushed Stainless Steel
- Blackened Metal
- Antique Brass
- Custom finishes available on request



MS  
METAL SHADES

## **AEON ARC**

Aeon Arc is a contemporary sculptural piece inspired by the fluid movement of wind and the timeless flow of form. Finished in muted champagne bronze, its elegant curves and balanced silhouette create a refined architectural presence, making it ideal for luxury interiors and curated spaces.



MS  
METAL SHADES



MS  
METAL SHADES

# AEON ARC

## Technical Information

### Details

---

#### Design Features

- Fluid arc-inspired sculptural form with a refined architectural silhouette
- Organic curves symbolizing motion, balance, and timeless elegance
- Contemporary collectible design with a muted champagne bronze finish

#### Material Specification

- Premium cast metal construction
- Smooth satin metallic surface with durable structural base
- Solid black pedestal support for stability and contrast

#### Purpose

- Decorative sculptural accent for luxury interiors and gallery spaces
- Designed to elevate modern consoles, pedestals, and curated environments
- Functions as both an artistic centerpiece and collectible design object

### Pricing

---

INR	USD
0	0

# AEON ARC

## Materials and Finishes

### Metal Finishes

---

- Muted Champagne Bronze Finish
- Satin Bronze Finish
- Soft Brushed Metallic Finish
- Matte Black Base Finish



# ARCHITECTURAL ELEMENTS

Our architectural creations are conceived to enhance and define spaces. Through thoughtful detailing and expert metalwork, these elements introduce structure, texture, and visual rhythm while seamlessly integrating with their surroundings.



MS  
METAL SHADES

## EMBER GRID PARTITION

Ember Grid Partition is a modular metal partition system crafted from precision-fabricated brass modules with sculptural diagonal inserts. Designed to define spaces without visual heaviness, it transforms open interiors into architectural statements through rhythm, geometry, and shadow play.

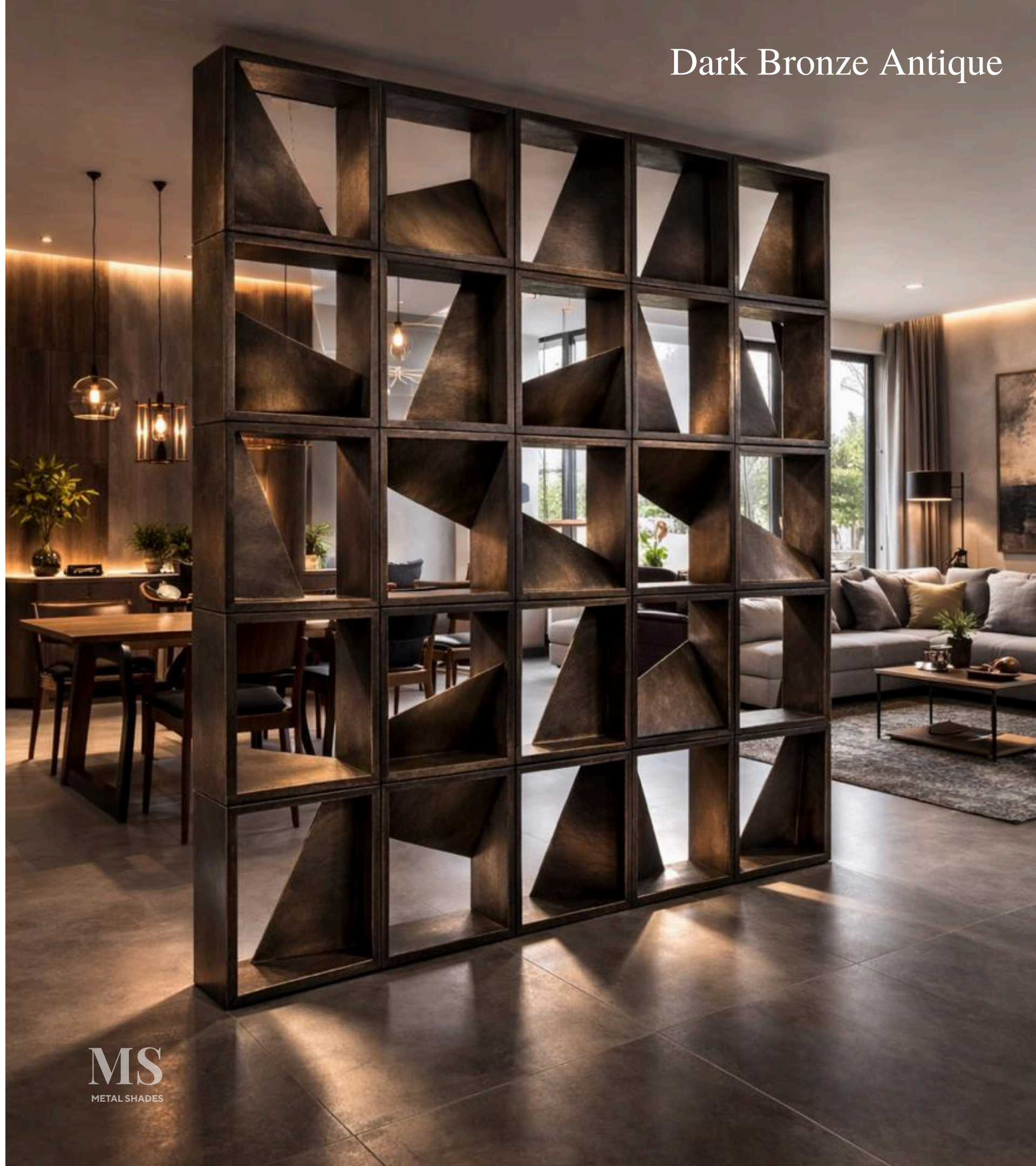
Finished in a hand-applied Dark Pink Antique patina, each module connects seamlessly to create customizable configurations — from subtle zoning elements to bold feature walls.

A perfect balance of structure, art, and flexibility for luxury residences, hospitality spaces, and premium offices.

Dark Pink Antique



Dark Bronze Antique



# EMBER GRID PARTITION

## Technical Information

### Details

---

#### Design Feature

- Sculptural diagonal metal insert for depth and shadow play
- Modular grid structure for flexible composition
- Architectural rhythm across large wall spans
- Balanced open-solid geometry for light filtration
- Clean minimal frame with concealed joints

#### Material Specification

- Brass precision-fabricated modules
- 1.5mm - 2 mm sheet metal internal sculptural panels
- Welded frame construction with seamless edge finishing
- Modular interlocking connection system

#### Purpose

- Space zoning without visual heaviness
- Statement architectural partition
- Decorative feature wall system
- Ideal for luxury residences, hospitality space lounges & premium offices
- Designed to evolve – reconfigurable as layout change make a brief description

### Pricing

---

INR	USD
0	0

# EMBER GRID PARTITION

## Materials and Finishes

### Metal Finishes

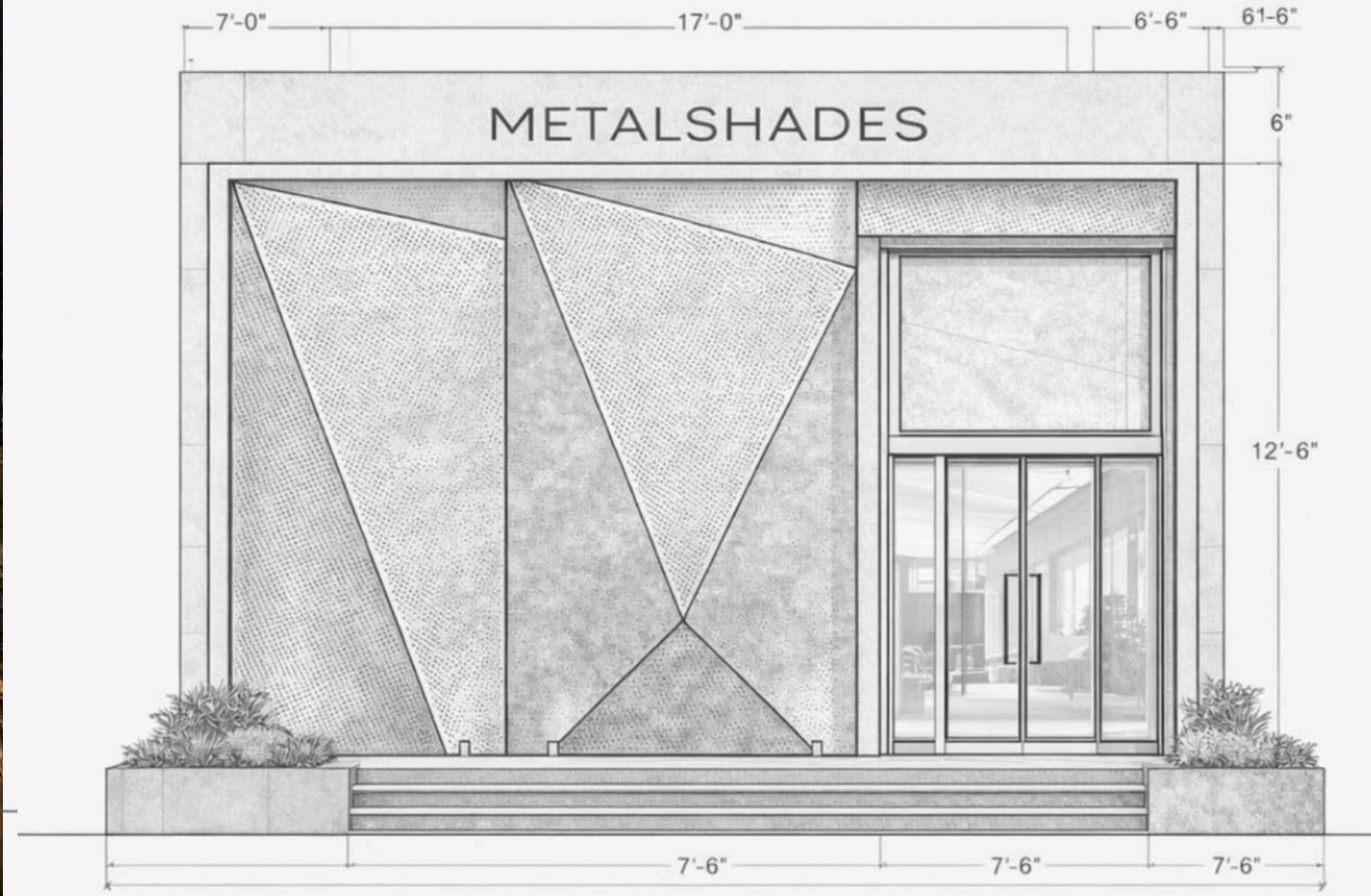
---

- Hand-applied Dark Pink Antique & Dark Bronze Antique Metal Finish
- Multi-layer patina process
- Matte to semi-matte protective topcoat
- Optional variations: Burnt Brass, Gunmetal Antique, Copper Oxide, Custom Patina



## SHADOW FOLD FACADE

A striking industrial-luxury façade concept crafted in antique patched gunmetal perforated panels, designed to transform commercial exteriors into bold architectural statements. Featuring folded geometric planes, warm LED backlit depth, and refined brass accents, the design blends raw concrete textures with precision metal craftsmanship. Ideal for showrooms, studios, premium retail spaces, or lounge façades, it delivers a sculptural, high-end Italian-industrial aesthetic with customizable scale, finishes, and lighting integration.



# SHADOW FOLD FACADE

## Technical Information

### Details

---

#### Design Feature

- Full-height perforated façade panels creating a dramatic commercial frontage
- Random folded geometric planes for a sculptural industrial-luxury aesthetic
- 2-4 inch offset installation producing depth and shadow play
- Integrated concealed LED backlighting for glowing night effect
- Continuity of façade pattern into pivot entrance door design

#### Material Specification

- 1.6-2 mm MS perforated sheets for exterior cladding panels
- eavy-duty MS subframe structure in matte black finish
- Raw concrete structural frame for architectural contrast
- Solid metal pivot door with reinforced internal frame
- Brass hardware accents for warmth and premium detailing

#### Purpose

- Luxury showroom
- Metal studio / experience center
- High-end retail outlet
- Café / lounge exterior

### Pricing

---

INR	USD
0	0

### Available Size

---

# SHADOW FOLD FACADE

## Materials and Finishes

### Metal Finishes

---

- Sandblasted base surface for uniform texture
- Dark gunmetal base coating
- Hand-applied antique patch patina (oxidized grey+ charcoal tones)
- Matte clear protective sealant for durability
- Subtle dry-brushed highlights enhancing depth and texture



## **PRISM FACADE | SCULPTURAL METAL PANEL**

Prism Facade is a contemporary sculptural metal wall panel inspired by architectural geometry and faceted prism forms. Its reflective surfaces and dimensional design create a dynamic interplay of light, depth, and texture, making it a bold statement piece for luxury interiors and modern spaces.



# PRISM FACADE | SCULPTURAL METAL PANEL

## Technical Information

### Details

---

#### Design Feature

- Prism-inspired geometric 3D faceted design
- Reflective architectural surface detailing

#### Material Specification

- Premium-grade stainless steel
- Precision-crafted metallic construction

#### Purpose

- Luxury statement wall panel for modern interiors
- Suitable for residential & commercial spaces

### Pricing

---

INR	USD
0	0

# PRISM FACADE | SCULPTURAL METAL PANEL

## Materials and Finishes

### Metal Finishes

---

- Brushed Gold, Rose Gold, Matte Black
- Custom dual-tone finishes available



## ORION BRASS BALUSTRADE

Orion Brass Balustrade blends modern architectural elegance with timeless luxury craftsmanship. Featuring a sleek geometric pattern with warm integrated lighting, this statement balustrade is crafted from premium stainless steel with a rich brass finish. Designed to elevate contemporary interiors, it adds sophistication, durability, and a refined visual presence to staircases and luxury spaces.

# ORION BRASS BALUSTRADE

## Technical Information

### Details

---

#### Design Feature

- Elegant geometric pattern detailing
- Sleek contemporary luxury design
- Integrated ambient lighting effect
- Clean linear structure with premium finish

#### Material Specification

- High-grade stainless steel frame
- Precision laser-cut metal detailing
- Durable architectural metal construction

#### Purpose

- Decorative staircase newel / feature post
- Luxury interior accent element
- Ideal for premium residential & hospitality spaces

### Pricing

---

INR	USD
0	0

# ORION BRASS BALUSTRADE

## Materials and Finishes

### Metal Finishes

---

- Antique bronze finish
- Brushed stainless steel finish
- Matte metallic texture with warm glow effect



## **ARCHITECTURAL MESH RAILING**

A refined architectural railing system featuring a brushed metal frame with precision-woven mesh infill and sculpted marble handrail accents. The seamless integration of natural stone and metallic finishes creates a sophisticated contrast of texture and tone. Designed for luxury residential and hospitality interiors, this railing offers both structural integrity and elevated aesthetic appeal –ideal for staircases, mezzanines, and feature balustrades.



MS  
METAL SHADES



MS  
METAL SHADES

# ARCHITECTURAL MESH RAILING

## Technical Information

### Details

---

#### Design Feature

- Decorative stair balustrade with integrated panel infill
- Geometric woven mesh pattern creating depth and visual interest
- Rounded stone handrail edge for comfort and premium detailing
- Clean framed borders emphasizing a modern luxury aesthetic

#### Material Specification

- Frame: powder-coated or PVD-finished mild steel or stainless steel
- Infill panel: woven metal mesh or laser-cut metal sheet
- Handrail cap: natural marble/stone with polished edges
- Fixing system: concealed brackets with welded or bolted joints

#### Purpose

- Provides safety and support along staircase edge
- Acts as a decorative architectural element
- Enhances interior with refined material contrast and texture
- Defines circulation space while maintaining visual openness

### Pricing

---

INR	USD
0	0

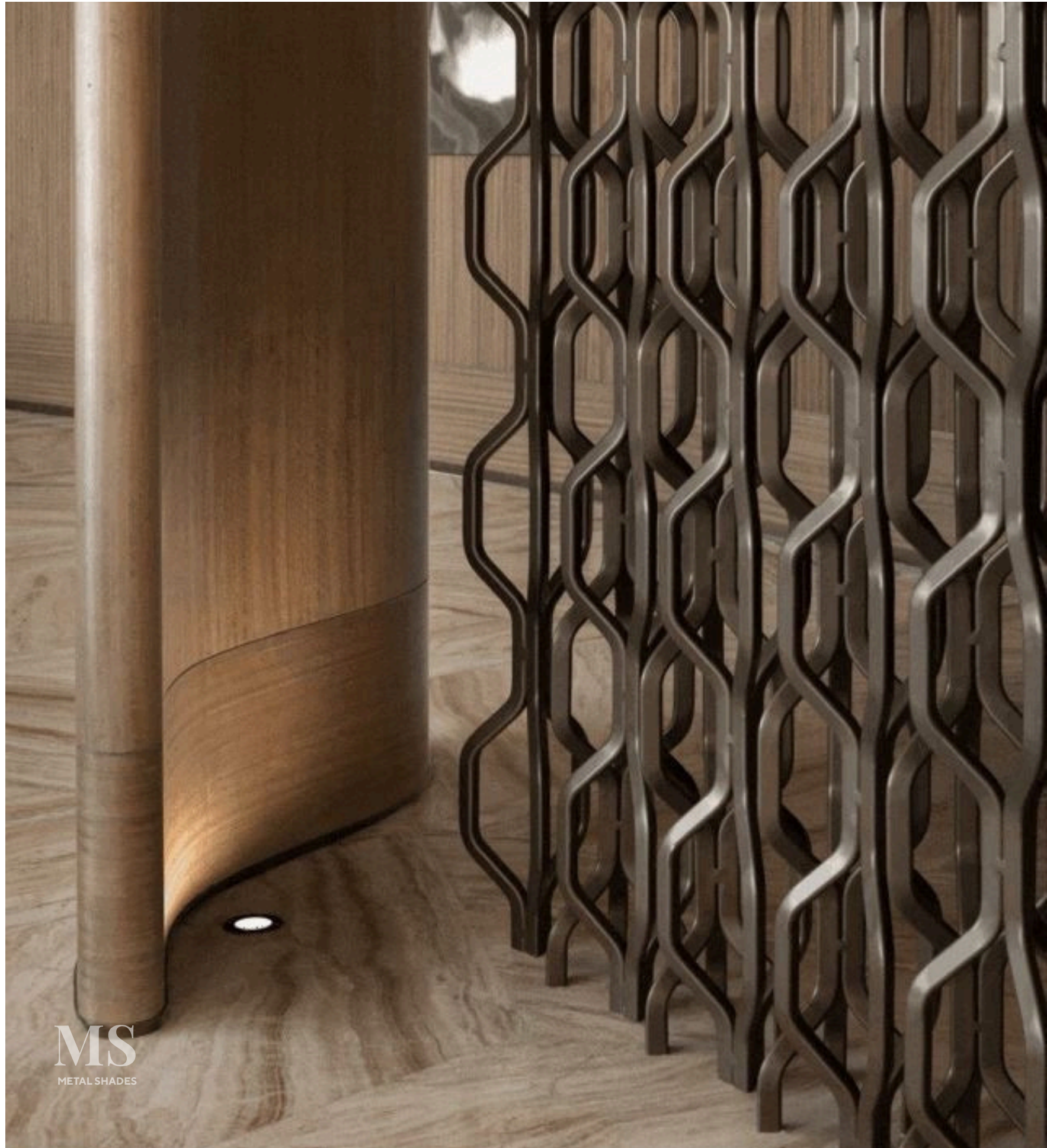
# ARCHITECTURAL MESH RAILING

## Materials and Finishes

### Metal Finishes

---

- Satin metallic bronze/brushed brass frame finish
- Polished natural stone handrail top with sealed protective coating
- Textured metal mesh panel with matte metallic tone



## **INTRICATE ARCHITECTURAL METAL SCREEN**

A meticulously designed decorative metal screen features an intricate pattern that enriches the depth and character of interior spaces. It is crafted to offer elegant visual separation while allowing light and airflow, seamlessly integrating functionality with sophisticated aesthetics.

**MS**

METAL SHADES



# INTRICATE ARCHITECTURAL METAL SCREEN

## Technical Information

### Details

---

#### Design Feature

- Intricate vertical metal screen with flowing geometric pattern
- Repeating interlinked profile creating a sense of rhythm and movement
- Semi-open structure allowing controlled light and visual transparency
- Elegant balance between privacy and openness

#### Material Specification

- High-quality metal sections crafted with precision fabrication
- Durable surface finish suitable for premium interior applications
- Engineered for structural stability and long-term performance

#### Purpose

- Architectural metal screen for spatial division
- Ideal for lobbies, living areas, corridors, and luxury interiors
- Adds visual interest while subtly defining spaces

### Pricing

---

INR	USD
0	0

# INTRICATE ARCHITECTURAL METAL SCREEN

## Materials and Finishes

### Metal Finishes

---

- Warm bronze-toned metallic finish with a refined satin sheen
- Smooth surface with subtle brushed texture
- Rich tonal depth enhancing the sculptural form



## **SCULPTURAL METAL PARTITION**

A sculptural metal partition crafted with intricate organic cutwork, finished in a refined metallic tone. The detailed pattern creates a dynamic interplay of light and shadow, adding depth and visual interest to the space. Designed as a statement architectural element, it functions as both a decorative backdrop and a subtle space divider, enhancing interiors with a contemporary, luxurious character while maintaining openness and elegance.



# SCULPTURAL METAL PARTITION

## Technical Information

### Details

---

#### Design Feature

- Intricately crafted architectural metal screen with layered organic patterns
- Combination of scalloped, cellular, and flowing abstract motifs
- Laser-cut detailing creating depth, transparency, and visual rhythm
- Framed composition designed as a sculptural backdrop
- Seamless blend of art and architecture

#### Material Specification

- High-quality metal sheet precision laser-cut into detailed patterns
- Hand-finished patina treatment developed through controlled processes
- Sturdy metal frame for structural strength and alignment
- Protective clear coating for durability and long-term finish stability
- Suitable for premium interior installations

#### Purpose

- Statement architectural screen and backdrop element
- Ideal for reception desks, feature walls, and lobby installations
- Designed to elevate luxury residential and commercial interiors

### Pricing

---

INR	USD
0	0

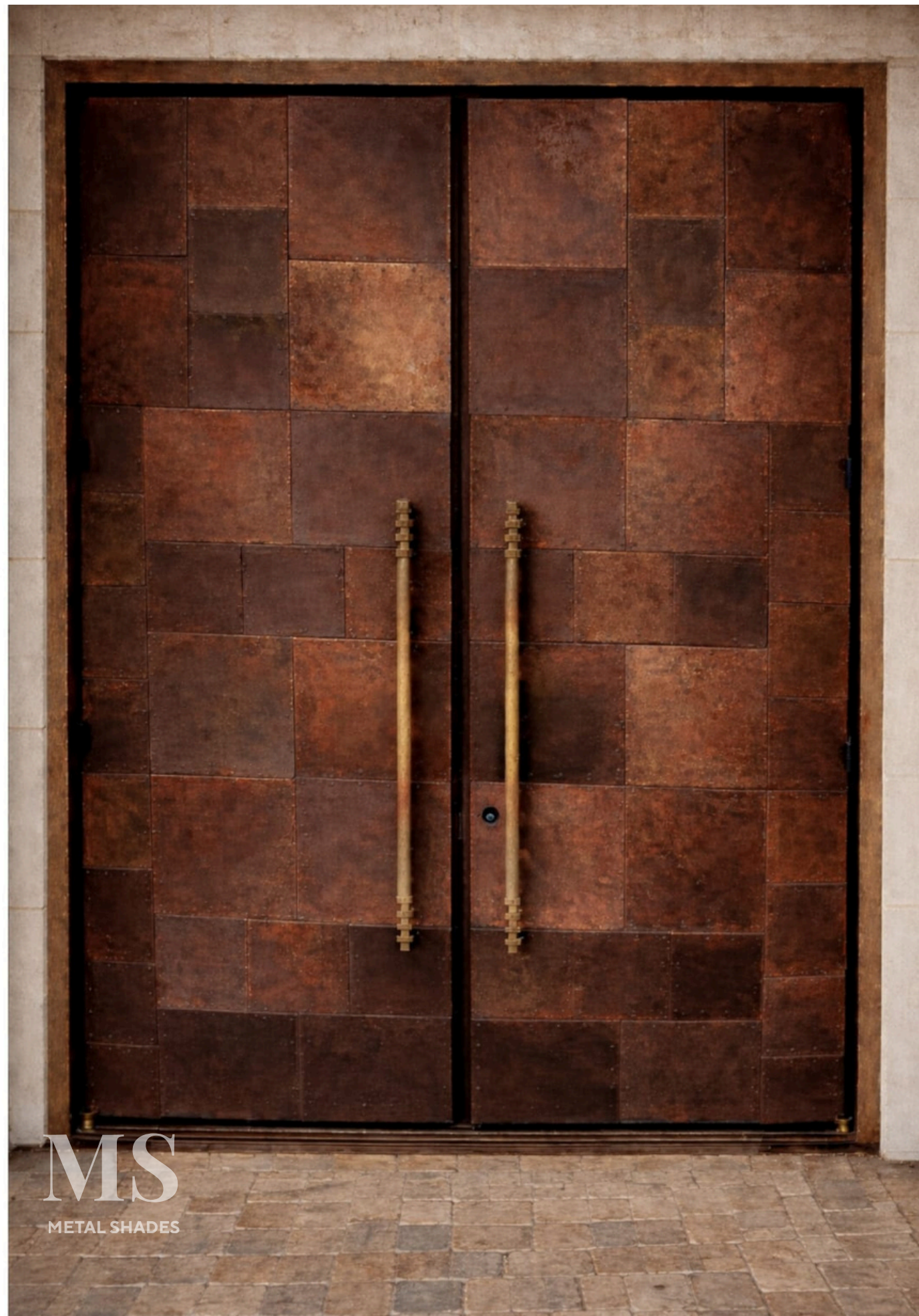
# SCULPTURAL METAL PARTITION

## Materials and Finishes

### Metal Finishes

---

- Warm antique brass / bronze-toned metallic finish
- Hand-finished surface with subtle patina highlights
- Satin sheen enhancing depth and intricate detailing
- Rich tonal variations adding an artisanal character



## **THE NATURAL OXIDIZED COPPER ENTRANCE**

This handcrafted statement door is a bespoke architectural masterpiece, featuring individually flame-treated copper panels in a geometric patchwork layout. Built on a high-strength mild steel core, it blends raw industrial texture with organic oxidation patterns for a unique, non-reflective matte finish. The design is elevated by solid brass vertical pull handles and a heavy-duty concealed hinge system, ensuring both elegance and security. Sealed with a clear matte lacquer for long-term durability, it is the ultimate entrance solution for luxury villas, boutique hotels, and high-end commercial spaces.



MS  
METAL SHADES

MS  
METAL SHADES

# NATURAL OXIDIZED COPPER ENTRANCE

## Technical Information

### Details

---

#### Design Feature

- Modular square & rectangular panel composition
- Minimal visible fasteners (clean industrial look)
- Solid brass vertical pull handles
- Heavy-duty concealed hinge system
- Custom frame in matching oxidized tone

#### Material Specification

- Door Structure: Mild steel core
- Cladding: Hand-finished copper sheets
- Handle: Solid brass (brushed antique finish)
- Finish Protection: Clear matte lacquer coating

#### Purpose

- Luxury residences
- Farmhouses & villas
- Boutique hotels
- Statement commercial entrances

### Pricing

---

INR	USD
0	0

# NATURAL OXIDIZED COPPER ENTRANCE

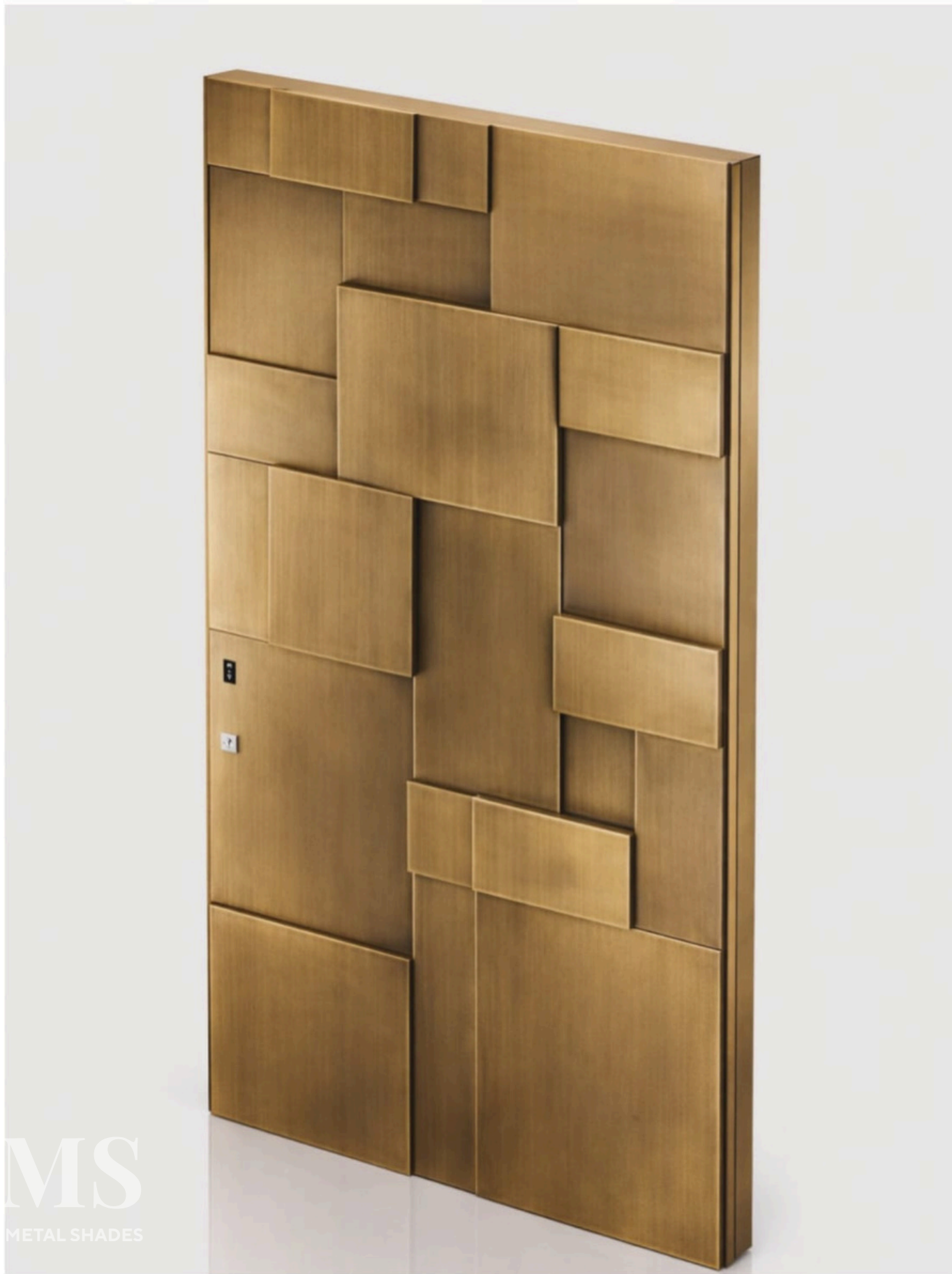
## Materials and Finishes

### Metal Finishes

---

Natural dull burnt copper

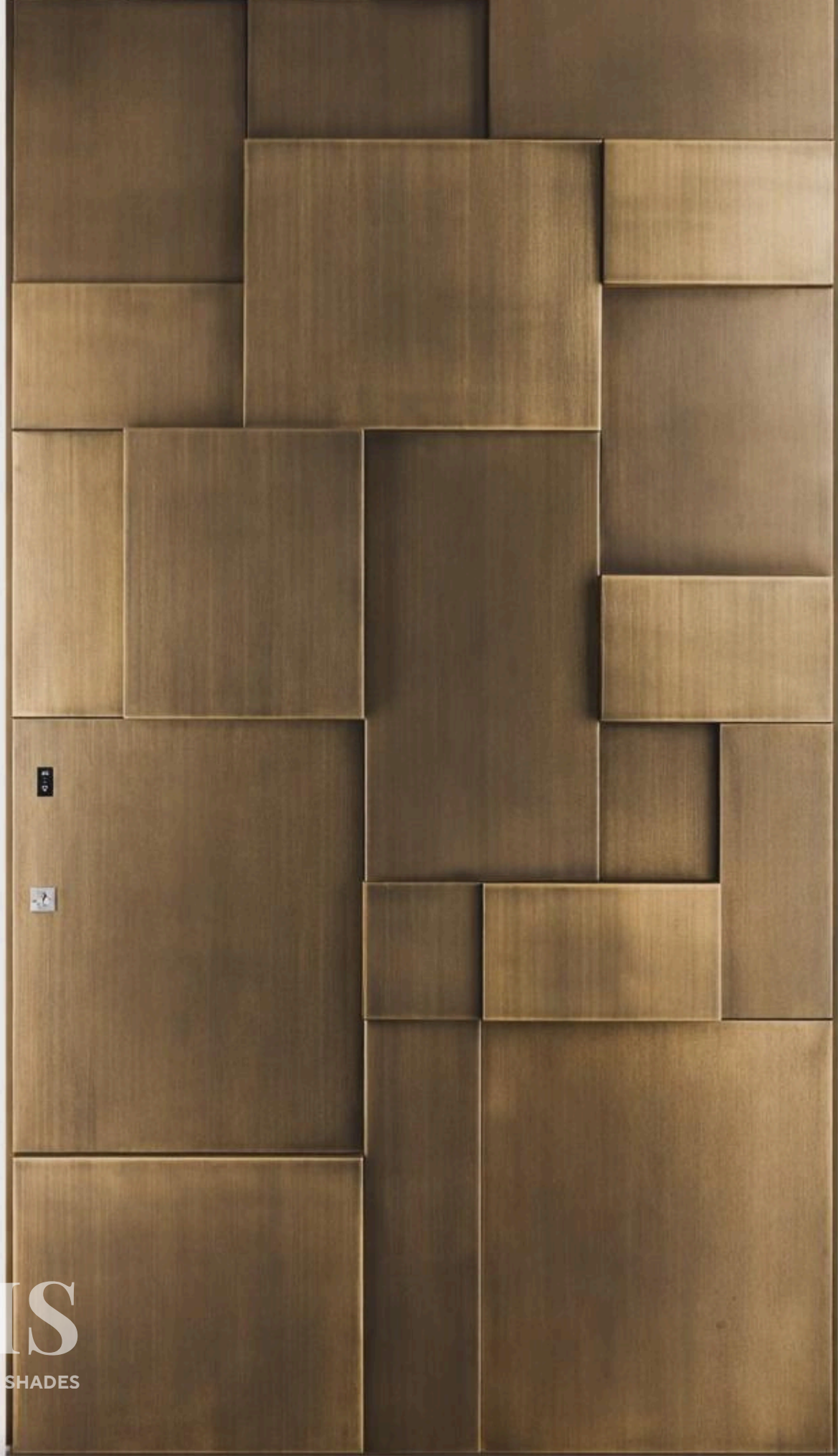
- Real flame-treated surface
- Organic oxidation patterns
- Matte, non-reflective texture
- Sealed for long-term durability



## MAISON D'OR

This handcrafted statement door is a bespoke architectural masterpiece, featuring individually flame-treated copper panels in a geometric patchwork layout. Built on a high-strength mild steel core, it blends raw industrial texture with organic oxidation patterns for a unique, non-reflective matte finish. The design is elevated by solid brass vertical pull handles and a heavy-duty concealed hinge system, ensuring both elegance and security. Sealed with a clear matte lacquer for long-term durability, it is the ultimate entrance solution for luxury villas, boutique hotels, and high-end commercial spaces.

MS  
METAL SHADES



MS  
METAL SHADES



# MAISON D'OR

## Technical Information

### Details

---

#### Design Feature

- Layered geometric panel layout with strong visual depth
- Multiple projection levels (10 / 18 / 25 mm) for a sculpted 3D effect
- Precision laser-cut rectangular forms with crisp edges
- Seamless welded joints with smooth ground finishing
- Subtle 3-5 mm shadow gaps enhancing contrast and definition

#### Material Specification

- Internal MS box section frame (40x60 mm) for structural rigidity
- Exterior panels in 1.6-2 mm thick metal sheets
- Solid flush core construction for strength and stability
- Precision fabrication ensuring alignment and durability

#### Purpose

- Luxury residences
- Farmhouses & villas
- Statement entrance
- Statement commercial entrances

### Pricing

---

INR	USD
0	0

# MAISON D'OR

## Materials and Finishes

### Metal Finishes

---

- Matte powder coat
- Brushed finish
- Antique patinaDual-tone finish
- Clear protective coat



MS  
METAL SHADES

## THE LATTICE ENTRY

The Lattice Entry is a luxury front door featuring an intricate, hand-fabricated geometric brass grille layered over a high-clarity glass pane. Set within a premium solid hardwood frame, this design balances high-end security with natural daylighting, casting beautiful linear shadows into your interior entryway. It is the perfect statement piece for contemporary architectural and luxury residential projects.



MS  
METAL SHADES



MS  
METAL SHADES

# THE LATTICE ENTRY

## Technical Information

### Details

---

#### Design Features

- Geometric Metal Overlay: Features an intricate, grid-pattern patchwork metal grille insert that blends modern luxury with a clean, structured aesthetic.
- Solid Timber Framing: A substantial solid wood frame creates strong vertical lines, balancing the detailed metalwork.
- Light & Layering: The design layers a metallic grille over a glass pane, allowing natural light to filter through while creating dynamic shadow patterns.

#### Material Specification

- Frame: Premium solid hardwood (such as Oak or Teak) with a prominent, high-end grain structure.
- Grille: Individually fabricated solid brass or high-grade metal alloy for precise geometric detailing.
- Glazing: Tempered safety glass (double-glazed for insulation and security).

#### Purpose

- Statement Entrance: Designed as a bespoke front entry door for luxury residential or high-end commercial projects.
- Light with Security: Functions as a robust physical barrier while maximizing natural daylight into the entryway.

### Pricing

---

INR	USD
0	0

# THE LATTICE ENTRY

## Materials and Finishes

### Metal Finishes

---

- Metalwork: Soft brushed or satin brass finish, offering a muted gold luster that emphasizes craftsmanship over mirror reflection.
- Timber: A natural matte, low-sheen protective coat that preserves the organic, pale blonde tones of the hardwood.
- Glass: Clear, high-clarity glass to showcase the depth of the metal overlay.



## **HAMMERED METAL RECEPTION COUNTER**

Handcrafted hammered stainless steel console with a sculptural modern silhouette, featuring a reflective premium finish in a clean minimalist setting. Perfect blend of luxury, contemporary design, and artisanal craftsmanship.



MS  
METAL SHADES



MS  
METAL SHADES

# HAMMERED METAL RECEPTION COUNTER

## Technical Information

### Details

---

#### Design Features

- Sculptural modern silhouette
- Handcrafted hammered texture
- Smooth flowing organic curves
- Luxury contemporary aesthetic

#### Material Specification

- Premium grade stainless steel
- Handcrafted metal fabrication
- Durable and corrosion-resistant construction

#### Purpose

- Luxury console / statement piece
- Ideal for reception areas and premium interiors
- Suitable for residential & commercial spaces

### Pricing

---

INR	USD
0	0

# HAMMERED METAL RECEPTION COUNTER

## Materials and Finishes

### Metal Finishes

---

- Mirror polish stainless steel
- Hammered metal finish
- High-gloss reflective surface



## **THE COPPER RIPPLE**

A monumental expression of fluid luxury, this statement reception counter features a seamless capsule silhouette wrapped in a hand-hammered, antique copper-finished apron. Capped with a highly polished metallic top plate, its striking contrast of deep organic texture and sleek surfaces creates a sophisticated front-of-house focal point for premium lobbies and luxury spaces.



**MS**  
METAL SHADES



**MS**  
METAL SHADES

# THE COPPER RIPPLE

## Technical Information

### Details

---

#### Design Features

- Capsule Form: A striking, elongated capsule-shaped monolithic structure with fully rounded, seamless corners.
- Integrated Top: Unlike recessed configurations, the polished counter surface completely caps the heavy base, matching its exact outer silhouette.
- Textural Balance: A heavily dimpled, organic texture wrapping the vertical apron contrasted by a smooth, reflective horizontal top.
- Geometric Accent: Positioned below a linear wave-patterned wall feature and framed by flanking vertical metal/wooden louvered wall panels.

#### Material Specification

- Desk Structure: Custom-formed structural framework wrapped in architectural metal sheeting (copper or bronze alloy).
- Countertop: Thick-gauge metal top plate or color-matched metallic solid surface polished to a high sheen.
- Surrounding Accents: Metallic-finished CNC feature panel, matching vertical wall louvers, and large-format neutral stone flooring.

#### Purpose

- The purpose of this setup is to serve as a high-end luxury reception counter and front-of-house statement piece for premium hotel lobbies, upscale spas, or corporate entrances.

### Pricing

---

INR	USD
0	0

### Available Size

---

# THE COPPER RIPPLE

## Materials and Finishes

### Metal Finishes

---

- Base Apron: A deeply hammered, textured finish with a warm antique copper/bronze patina that diffuses surrounding architectural light.
- Countertop Surface: A highly polished, semi-gloss or mirrored metallic finish emphasizing a clean, luxury aesthetic.
- Wall Elements: Brushed metallic or champagne-gold finishes on the wave panel and louvers, set against a matte, texturized stucco wall.



# FURNITURE

Designed with a focus on proportion, materiality, and craftsmanship, our furniture collection brings together functionality and timeless design. Each piece is meticulously crafted to create a lasting presence within contemporary interiors.



## **MODERN CLASSICAL CONSOLE**

The luxury designer console table features a premium solid wood tabletop, elegantly complemented by sculptural metal pedestal bases that are finished to a high standard. This piece is meticulously designed to harmonize elegance with structural integrity, showcasing rich natural textures and precise detailing, which renders it a standout furniture item. Its sophisticated form and robust construction make it well-suited for upscale residential interiors, luxury lobbies, boutique hotels, and contemporary commercial environments.



MS  
METAL SHADES



MS  
METAL SHADES

# MODERN CLASSICAL CONSOLE

## Technical Information

### Details

---

#### Design Feature

- Organic, free-form tabletop shape for a sculptural aesthetic
- Dual pedestal base with hand-formed appearance
- Contrast of warm wood texture and metallic base for luxury appeal
- Minimalist yet artistic statement furniture piece

#### Material Specification

- Tabletop: solid hardwood or engineered wood veneer with stain and lacquer finish
- Base: cast metal, brass-plated steel, or resin with metallic coating
- Protective sealant layer for durability and stain resistance

#### Purpose

- Functional table for dining, meetings, or display
- Serves as a centerpiece furniture element
- Enhances interior with artistic and premium design character

### Pricing

---

INR	USD
0	0

# MODERN CLASSICAL CONSOLE

## Materials and Finishes

### Metal Finishes

---

- Smooth natural wood top with rich walnut-tone stain and clear protective polish
- Sculptural base in metallic gold/brass finish with soft reflective sheen



## **PATINA ORBIT CONSOLE**

A sculptural luxury console featuring an organic flowing silhouette paired with hand-finished patina textures and striking spherical detailing. Designed as a statement centerpiece, the piece blends artistic craftsmanship with contemporary elegance, creating a bold yet refined presence for modern interiors.



# PATINA ORBIT CONSOLE

## Technical Information

### Details

---

#### Design Features

- Organic free-flowing tabletop silhouette
- Sculptural spherical support structure
- Contemporary artistic statement design
- Balanced blend of geometry and fluid form
- Luxury collectible-inspired aesthetic

#### Material Specification

- Premium engineered wood / stone-finish top
- Decorative textured spherical elements
- Mild steel structural framework
- Handcrafted detailing and surface treatment
- High-durability premium construction

#### Purpose

- Ideal for modern and contemporary interiors
- Functional surface for décor display
- Creates a bold artistic focal point
- Suitable for foyer and living spaces

### Pricing

---

INR	USD
0	0

# PATINA ORBIT CONSOLE

## Materials and Finishes

### Metal Finishes

---

- Hand-applied verdigris patina finish
- Antique oxidized metallic texture
- Matte protective coating
- Aged artisanal surface appearance
- Premium handcrafted metal detailing



## **THE CLASP CENTER TABLE**

An architectural masterpiece of stone and metal, the Clasp Center Table features a monolithic octagonal marble top with dramatic grey veining. Its low-slung, floating silhouette is anchored by striking brushed brass legs that wrap upward to elegantly clasp the mitered edges of the stone. This high-impact center piece brings a clean, contemporary luxury to upscale residential living rooms and executive lounges.



MS  
METAL SHADES



MS  
METAL SHADES

# THE CLASP COFFEE TABLE

## Technical Information

### Details

---

#### Design Features

- Octagonal Geometry: Eight-sided tabletop silhouette with clean, crisp mitered edges.
- Floating Aesthetic: Monolithic top perched on a recessed base, creating a lightweight look.
- Clamping Legs: Architectural metal legs that wrap upward and clasp the stone top.
- Low-Slung Profile: Designed close to the ground to match contemporary luxury seating.

#### Material Specification

- Tabletop: Premium marble slab with bold, dramatic grey veining.
- Sub-Base: Hidden engineered plywood substructure to safely reinforce the stone weight.
- Chassis: Heavy-gauge, solid architectural metal sheets for rigid structural support.

#### Purpose

- Central Coffee Table: High-impact anchor piece for upscale, open-plan living rooms.
- Lounge Centerpiece: Tailored for VIP office lobbies and luxury hotel reception zones.
- Sculptural Surface: Low-slung platform to showcase high-end design books or art artifacts.

### Pricing

---

INR	USD
0	0

### Available Size

---

# THE CLASP COFFEE TABLE

## Materials and Finishes

### Metal Finishes

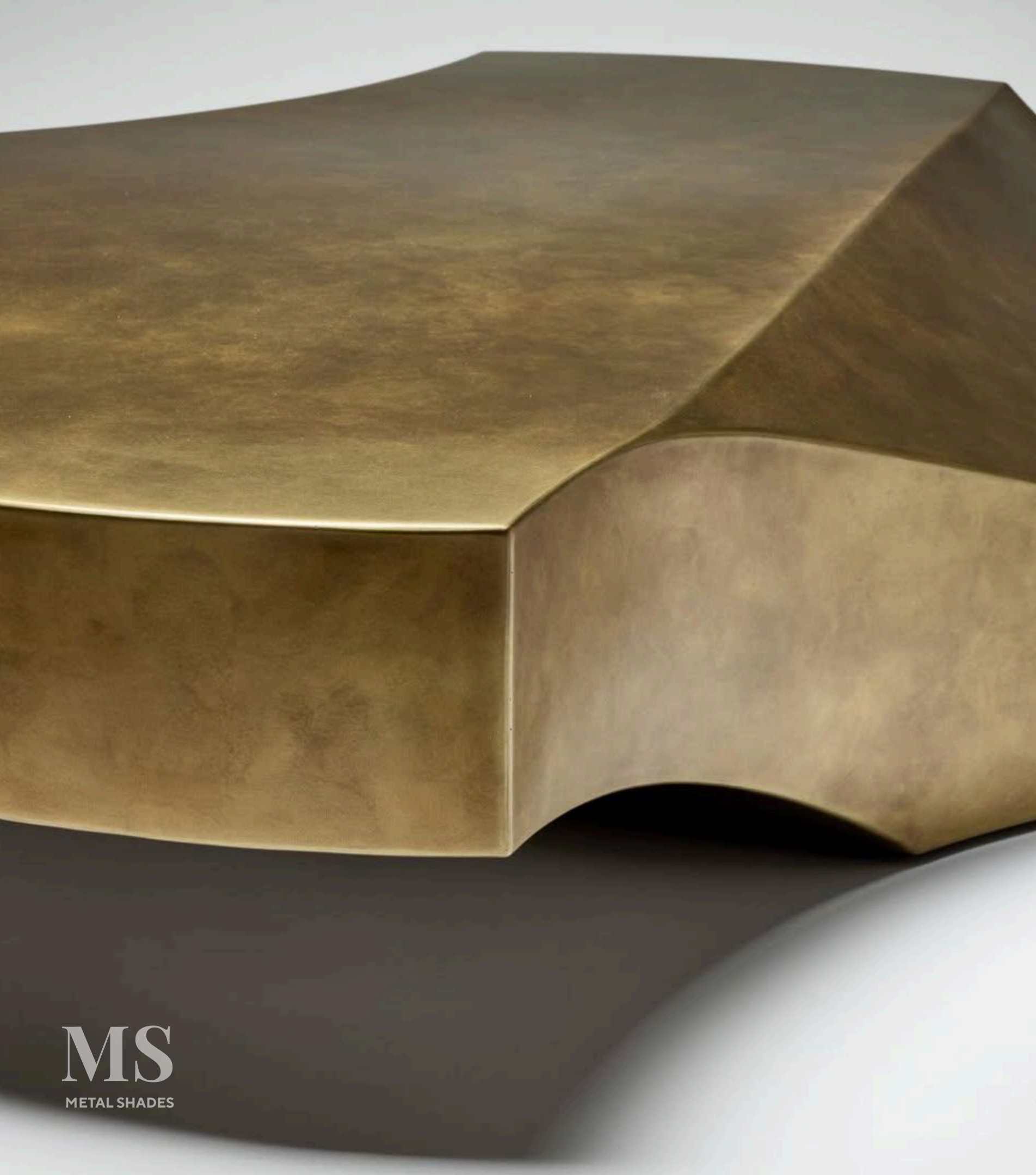
---

- Clamping Accents: Brushed brass or champagne gold finish with a satin texture.
- Base Trim: Matte black powder-coated steel under-plating to conceal the frame.
- Protection: Clear, anti-tarnish protective lacquer to prevent metallic oxidation.



## **THE CURVE MONOLITHE**

A bold testament to biomorphic minimalism, The Curve Monolith redefines the boundary between functional furniture and sculptural art. Crafted as a seamless, low-profile statement piece, it features a striking, continuous silhouette where solid metallic mass meets fluid, organic geometry.



**MS**  
METAL SHADES



**MS**  
METAL SHADES

# THE CURVE MONOLITHE

## Technical Information

### Details

---

#### Design Features

- Seamless Monolithic Form: No visible joints or legs; crafted to look like a single, solid block of metal.
- Sculptural Fluidity: A dramatic, sweeping curve on the surface that creates a striking play of light and shadow.
- Low-Profile Silhouette: A sleek, low-slung design that adds a bold architectural presence to any room.

#### Material Specification

- Core Structure: Premium heavy-gauge architectural metal alloy.
- Craftsmanship: 100% hand-sculpted contours with flawless, precision-blended edges.

#### Purpose

- Statement Centerpiece: Ideal as a luxury coffee table for high-end residential living rooms.
- Lounge & Gallery Spaces: Perfect for executive lounges, boutique hotels, and minimalist interiors as functional art.

### Pricing

---

INR	USD
0	0

### Available Size

---

# THE CURVE MONOLITHE

## Materials and Finishes

### Metal Finishes

---

- Bespoke Patina: Hand-applied natural burnt copper and rich brass/bronze tones.
- Muted Luster: Soft, brushed texture with a diffused sheen that highlights the metal's raw depth.
- Protective Coating: Sealed with a premium clear coat to prevent oxidation and lock in the tone.



## **COFFEE TABEL**

A striking architectural statement piece crafted from premium, individually fabricated metal panels. Featuring a dynamic, multi-level geometric grid design, this low-slung platform combines functional surfaces with a sculptural, modular aesthetic. The seamless, raw metallic finish highlights fine craftsmanship, making it a perfect center expression for modern luxury interiors and upscale lounge spaces.



MS  
METAL SHADES



MS  
METAL SHADES

# COFFEE TABEL

## Technical Information

### Details

---

#### Design Feature

- Geometric Multi-Level Grid: Stepped layout of individual blocks at varying heights for a dynamic look.
- Sculptural & Modular: Blurs the line between a luxury centerpiece and a modern art installation.
- Low-Slung Silhouette: Clean, monolithic form that sits low to ground to keep spaces open.
- Seamless Joinery: Precision-aligned edges and crisp seams for a sharp, tailored structure.

#### Material Specification

- Premium Metal Panels: Fabricated using high-grade, heavy-gauge architectural sheet metal or stainless steel.
- Internal Framework: Engineered over a robust, heavy-duty inner frame to ensure long-term stability.

#### Purpose

- Luxury Centerpiece: Designed as a high-impact focal point for premium living rooms, lobbies, and lounges.
- Multi-Functional: Works perfectly as an oversized coffee table or a low-profile display platform.

### Pricing

---

INR	USD
0	0

# COFFEE TABEL

## Materials and Finishes

### Metal Finishes

---

- Satin/Matte Luster: Softly diffuses light without harsh glare or heavy reflections.
- Brushed Texture: Features a refined, ultra-fine linear polished grain.
- Flawless Edges: Cleanly finished seams and smooth, micro-beveled corners.



## **THE CUBO NIGHTSTAND**

A bold intersection of minimalist architecture and master metal craftsmanship. The Cubo Nightstand features a striking monolithic silhouette clad entirely in hand-finished metal. Boasting a handleless, push-to-open dual drawer system and a sleek floating plinth base, it serves as a powerful geometric statement piece for high-end residential and luxury hospitality spaces.



**MS**  
METAL SHADES



# THE CUBO NIGHTSTAND

## Technical Information

### Details

---

#### Design Features

- Monolithic & Handleless: Clean, cubic form with a seamless, grid-like front.
- Mitered Joints: Sharp, precision-engineered corners for a solid block appearance.
- Recessed Plinth: A hidden sub-base that creates a sleek, floating shadow line.

#### Material Specification

- Core: High-grade MR MDF or plywood substrate to prevent metal warping.
- Skin: Wrapped in heavy-gauge premium sheet metal.
- Hardware: Concealed, heavy-duty soft-close / push-to-open runners.

#### Purpose

- High-End Accent: Luxury nightstand or premium living room side table.
- Commercial/Hospitality: Ideal for boutique hotel suites and executive lounges.

### Pricing

---

INR	USD
0	0

# THE CUBO NIGHTSTAND

## Materials and Finishes

### Metal Finishes

---

- Antique Burnished Brass: Hand-brushed with a layered, cloudy patina.
- Bronzed Gunmetal: Deep charcoal tones with subtle warm undertones.
- Smoked Copper: Dark, multi-tonal treated copper with a rich, aged depth.



## **ARBOR ACCENT TABLE**

A striking blend of organic warmth and architectural precision. It features a sculpted solid wood pillar paired with a cantilevered glass surface that appears to float effortlessly, grounded by a sleek metal foundation. Its refined silhouette and soft, rounded contours make it a sophisticated addition to luxury modern interiors.



MS  
METAL SHADES



MS  
METAL SHADES

# ARBOR ACCENT TABLE

## Technical Information

### Details

---

#### Design Features

- **Cantilevered Design:** A floating glass top that extends from the central column for a striking, gravity-defying aesthetic.
- **Geometric Form:** Combines a pill-shaped wooden pillar with an echoing curved metal base for a balanced silhouette.
- **Material Harmony:** A seamless, architectural intersection of metal, wood, and glass at a single axis.

#### Material Specification

- **Tabletop:** High-clarity tempered glass with polished, smooth-radius edges.
- **Central Column:** Solid hardwood core machined into an oblong profile with a matching grain top cap.
- **Base:** High-strength, precision-cut structural metal plate providing a stable, low-profile counterweight.

#### Purpose

- **Luxury Living Spaces:** A premium accent table styled alongside high-end sofas or deep lounge armchairs.
- **Functional Display:** A dual-level surface allowing the wood cap to host decor while the glass tier holds daily essentials.
- **Architectural Statement:** Crafted as a sophisticated, minimalist focal point for upscale residential and hospitality interiors.

### Pricing

---

INR	USD
0	0

# ARBOR ACCENT TABLE

## Materials and Finishes

### Metal Finishes

---

- **Glass:** Completely transparent, clear polished finish to maximize light diffusion.
- **Wood:** Rich walnut finish with a smooth matte protective coat highlighting the natural grain.
- **Metal Base:** Sleek, dark charcoal powder-coated finish for a scratch-resistant luxury texture.



### **MOLTEN PERCH |** Accent Table

A sculptural accent table blending molten-inspired cast metal forms with a refined upholstered body. Designed as a collectible statement piece, Molten Perch balances raw artistry with functional elegance for contemporary luxury interiors.



MS  
METAL SHADES



MS  
METAL SHADES

# MOLTEN PERCH | ACCENT TABLE

## Technical Information

### Details

---

#### Design Features

- Sculptural Form: Art-furniture piece with an abstract, sculptural silhouette.
- Brutalist Base: Heavy, molten-look metal frame with raw, asymmetric legs.
- Nested Core: Geometric storage unit snugly enclosed by the organic metal framework.
- Flush Storage: Clean, seamless drawer integrated directly into the leather core.
- Top Accent: Extended metal handle on top serving as a unique architectural focal point.

#### Material Specification

- Base Frame: Heavy cast aluminum or brass for detailed, fluid texturing.
- Cabinet Wrap: Premium full-grain aniline leather for tactile luxury and warmth.
- Tailoring: High-density, precise stitching along edges for a flawless finish.
- Inner Carcass: Rigid internal structure ensuring smooth drawer functionality.

#### Purpose

- Accent Table: High-end side table for luxury living spaces and lounges.
- Bespoke Nightstand: Statement bedside piece for avant-garde master bedrooms.
- Gallery Showcase: Standalone conversation starter for luxury hospitality and showrooms.

### Pricing

---

INR	USD
0	0

# MOLTEN PERCH | ACCENT TABLE

## Materials and Finishes

### Metal Finishes

---

- Raw Silver: Bright metallic luster mimicking unrefined, hand-sculpted aluminum.
- Oxidized Patina: Darkened recesses to contrast and highlight the molten texture.
- Satin Topcoat: Protective matte-satin sealer to prevent fingerprints and tarnish.



**MS**  
METAL SHADES

## **INFINITY ARC TABLE**

Infinity Arc Table is a contemporary sculptural side table defined by its flowing looped metal framework and refined architectural silhouette. Featuring a sleek black lacquer glass top paired with a muted champagne bronze finish, the design creates a perfect balance between elegance and structural artistry. Its fluid curves and open geometric form bring a sophisticated statement to luxury interiors, lounges, and modern curated spaces.



MS  
METAL SHADES



MS  
METAL SHADES

# INFINITY ARC TABLE

## Technical Information

### Details

---

#### Design Features

- Interlocking Loops: Three intersecting circular bands create a fluid, 360-degree sculptural silhouette.
- Seamless Joinery: Hidden welds and blended seams ensure a flawless, unbroken metal profile.
- Flush Top: The dark top sits perfectly flush on the arcs for a clean, architectural look.

#### Material Specification

- Base: Premium architectural-grade brass / heavy-gauge metal alloy.
- Top: Tinted black toughened glass (customizable to luxury marble or solid surfaces).
- Craftsmanship: Precision-rolled metal bands calibrated for perfect geometry.

#### Purpose

- Luxury Accent: A high-impact side table for premium residential living rooms, formal lounges, and executive offices.
- Commercial Appeal: Perfect for boutique hotel lobbies, reception areas, and luxury retail showrooms.

### Pricing

---

INR	USD
0	0

# INFINITY ARC TABLE

## Materials and Finishes

### Metal Finishes

---

- Brushed Brass (As Shown): Hand-grained satin texture with a soft-lustre protective coat.
- Available Patinas: Natural Burnt Copper, Antique/Aged Brass, Matte Black Powder-Coat, and Mirror-Polished Brass.



## **THE TORQUE TABLE**

The Torque Table is a luxury architectural centerpiece that merges high-end metal fabrication with sculptural art. It features an elongated, softly rounded racetrack oval top supported by a striking asymmetrical dual-base. One side rests on a minimalist angular panel, perfectly balancing a dramatic pillar of subtly shifting, stacked metal rings. Finished in a refined brushed satin pewter, this table makes an unforgettable statement in any contemporary luxury interior.



MS  
METAL SHADES



MS  
METAL SHADES

# THE TORQUE TABLE

## Technical Information

### Details

---

#### Design Features

- **Sculptural Asymmetry:** A dual-base design balancing a clean, angular panel on one end with a dramatic, stacked-ring pillar on the other.
- **Stacked Geometric Pillar:** Layered, subtly shifting metal rings create a dynamic sense of fluid movement.
- **Racetrack Top:** An elongated tabletop with softly rounded ends that smooths out the industrial metal edges.

#### Material Specification

- **Structure:** Heavy-gauge, precision-welded metal panels over a reinforced structural steel core for absolute stability.
- **Seamless Joinery:** High-end architectural metal fabrication with flawlessly blended, seamless edges.

#### Purpose

- **Statement Centerpiece:** Designed as a functional art installation for luxury residential dining rooms or executive boardrooms.

### Pricing

---

INR	USD
0	0

# THE TORQUE TABLE

## Materials and Finishes

### Metal Finishes

---

- **Metalwork:** A refined, uniform brushed stainless steel or pewter finish with a soft satin sheen.
- **Surface Texture:** Smooth, low-gloss texture that diffuses ambient overhead lighting elegantly, highlighting the metallic contours without harsh, mirror-like reflections.



## **TERRAFORGE STOOL**

Terraforge Stool is a sculptural furniture piece inspired by raw earth formations and forged metal artistry. Featuring an organic architectural silhouette with a richly textured metallic finish, it blends contemporary design with artisanal character. Its bold monolithic form makes it both a functional seating element and a striking statement piece for luxury interiors, lounges, and curated modern spaces.



MS  
METAL SHADES



MS  
METAL SHADES

# TERRAFORGE STOOL

## Technical Information

### Details

---

#### Design Features

- Organic monolithic form inspired by raw natural rock formations
- Sculptural silhouette with heavily textured architectural detailing
- Contemporary statement piece with artisanal handcrafted character

#### Material Specification

- Premium cast metal / textured composite construction
- Durable structural body with smooth polished top surface
- High-strength framework designed for stability and longevity

#### Purpose

- Functional stool with sculptural decorative appeal
- Ideal for luxury interiors, lounges, galleries, and modern living spaces
- Serves as both seating and an artistic accent piece

### Pricing

---

INR	USD
0	0

# TERRAFORGE STOOL

## Materials and Finishes

### Metal Finishes

---

- Antique Bronze Finish
- Textured Metallic Finish
- Burnished Brass Finish
- Matte Patina Finish



## **THE QUADRA STOOL**

A masterful blend of organic warmth and geometric precision, the Quadra Stool features four modular wood sections that seamlessly interlock in a striking, bi-color checkerboard pattern. With its pillowed edges, expressive grain contrasts, and highly sculptural silhouette, this versatile piece functions beautifully as a standalone accent stool or a unique designer side table for high-end minimalist spaces.



**MS**  
METAL SHADES



**MS**  
METAL SHADES

# THE QUADRA STOOL

## Technical Information

### Details

---

#### Design Features

- Interlocking Composition: Four modular wooden sections that seamlessly puzzle together.
- Bi-Color Contrast: Alternating light and dark wood blocks in a checkerboard layout.
- Softened Profiles: Radiused, pillowed seat edges and gently curved legs.
- Cantilevered Detail: Seat pads subtly overlap the legs, highlighting precision joinery.
- Compact Footprint: High-impact sculptural form that optimizes floor space.

#### Material Specification

- Light Timber: Premium White Oak or Ash with expressive grain.
- Dark Timber: High-grade American Walnut or deeply stained Oak.
- Core Framing: Hidden internal steel dowels for rock-solid stability.

#### Purpose

- Accent Seating: Artistic standalone stool for living areas, entryways, or vanities.
- Dual-Purpose Surface: Functions perfectly as a unique side table or end table.
- Sculptural Decor: Adds geometric warmth to Japandi and minimalist interiors..

### Pricing

---

INR	USD
0	0

# THE QUADRA STOOL

## Materials and Finishes

### Metal Finishes

---

- Internal Fasteners: Black-oxide coated carbon steel alignment pins and screws.
- Base Glides: Concealed, heavy-duty floor-protecting levelers.
- Surface Seal: Ultra-matte, non-yellowing clear protective coat.



## **RAVEN DESK**

Raven Desk is where sculpture meets function. Its fluid kidney-shaped silhouette and brushed metallic finish bring a quiet boldness to any space – seamlessly merging minimalist architecture with refined craftsmanship. Monolithic in form yet effortless in presence, Raven is designed for those who treat their workspace as an extension of their aesthetic – equally at home in a luxury residence, executive suite, or modern creative studio.



MS  
METAL SHADES



MS  
METAL SHADES

# RAVEN DESK

## Technical Information

### Details

---

#### Design Features

- Fluid kidney-shaped sculptural silhouette
- Seamless curved tabletop with a refined metal edge
- Cylindrical three-drawer pedestal with spherical knobs
- Curved flat-panel leg for architectural balance
- Monolithic form with a bold yet understated presence

#### Material Specification

- Handcrafted premium-grade metal construction
- Precision-fabricated brushed stainless steel body
- Integrated storage unit with seamless detailing
- Durable engineered structure with refined surface finishing

#### Purpose

- Luxury executive desk for modern interiors
- Ideal for offices, studios, reception areas, and designer workspaces
- Creates a sophisticated focal point within contemporary environments
- Combines practicality with sculptural artistic appeal

### Pricing

---

INR	USD
0	0

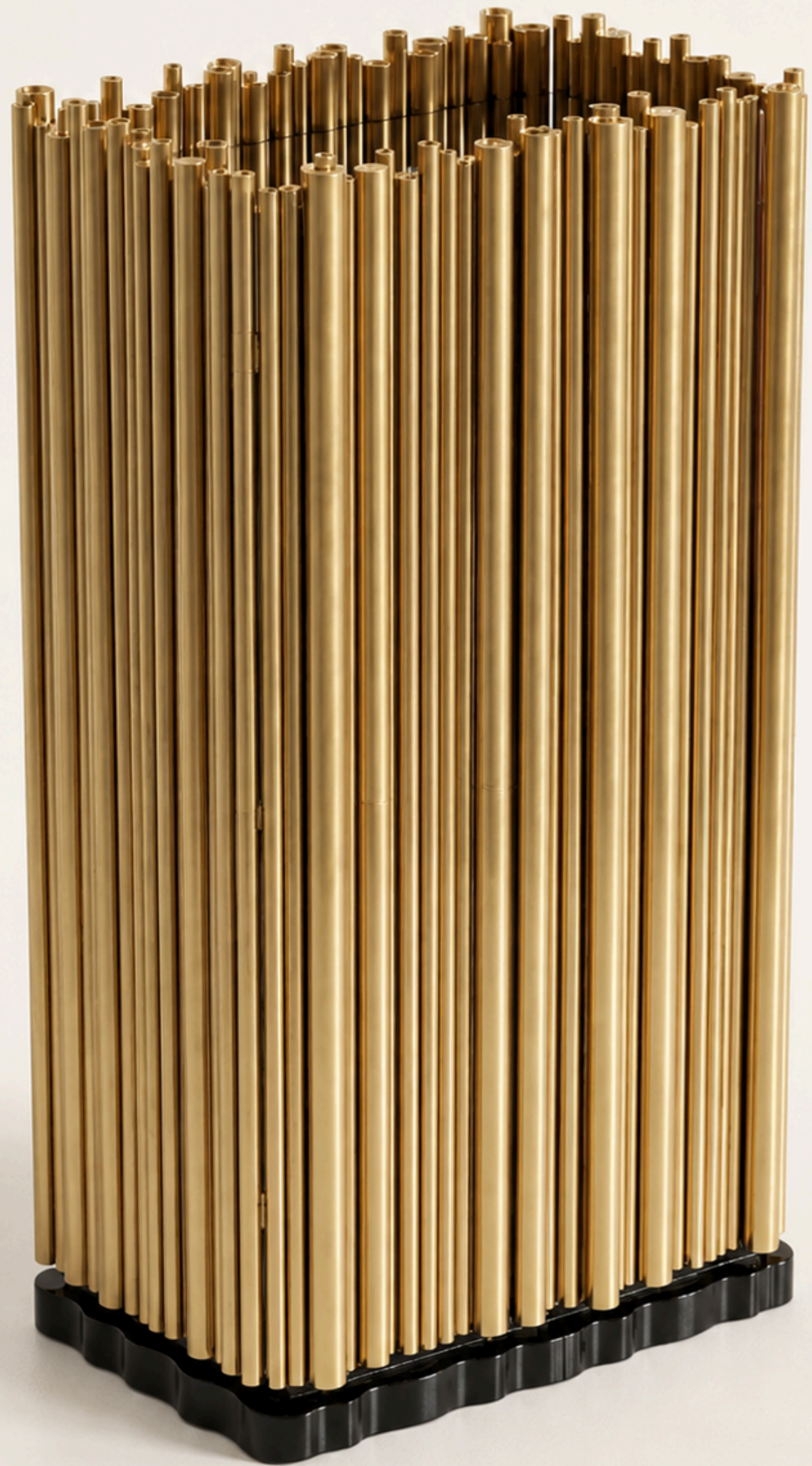
# RAVEN DESK

## Materials and Finishes

### Metal Finishes

---

- Brushed Stainless Steel
- Mirror Polish Stainless Steel
- Champagne Gold Finish
- Blackened Metal Finish
- Antique Brass Finish
- Custom luxury finishes available on request.



MS  
METAL SHADES



MS  
METAL SHADES



## FLUTED BRASS CABINET

Fluted Brass Cabinet is a sculptural storage piece defined by its elegant vertical brass rod detailing and bold architectural form. Designed with a luxurious metallic finish, sleek black base, and refined interior shelving, it seamlessly combines modern sophistication with practical functionality, making it a striking statement piece for contemporary interiors.

# FLUTED BRASS CABINET

## Technical Information

### Details

---

#### Design Features

- Vertical fluted brass rod structure for a bold architectural appearance
- Sculptural and contemporary form with a luxurious statement look
- Sleek black base creates strong visual contrast and stability
- Open-display style with refined interior shelving for elegant storage

#### Material Specification

- Premium quality metal rod construction
- Engineered wood / plywood inner cabinet structure
- Tempered glass shelving (if applicable)
- Solid base support with durable framework

#### Purpose

- Ideal for luxury storage, bar display, and décor presentation
- Perfect for modern living and hospitality spaces

### Pricing

---

INR	USD
0	0

# FLUTED BRASS CABINETHE

## Materials and Finishes

### Metal Finishes

---

- Brushed Brass Finish
- Satin Gold Finish
- Matte Black Base Finish



## **THE ARDEN BURL BED**

A masterclass in modern luxury, this statement bed features fluid, curved corners clad in a mirrored, high-gloss Walnut Burl veneer. A bespoke, sepia-toned deer mural is inset into the headboard, beautifully framed by tactile cream bouclé upholstery and structural, satin-brushed brass accents. Designed as a commanding hero piece, it seamlessly bridges old-world artistry with sleek, contemporary architecture.



MS  
METAL SHADES



MS  
METAL SHADES

# THE ARDEN BURL BED

## Technical Information

### Details

---

#### Design Features

- Silhouette: Mid-Century Modern warmth meets contemporary luxury, featuring soft, curved radius corners on the frame.
- Focal Point: A bespoke, sepia-toned mural of deer in motion inset directly into the headboard.
- Texture Contrast: Masterful balance of high-gloss wood veneer, soft matte cream upholstery, and sleek metal accents.
- Floating Base: Slim, inset metal bracket feet elevate the grand frame for a lighter visual footprint.

#### Material Specification

- Frame: Premium hardwood clad in book-matched Walnut or Mahogany Burl veneer.
- Wood Finish: Multi-layer, mirrored high-gloss polyester lacquer to deepen the natural grain.
- Upholstery: High-pile cream bouclé or heavy-weave neutral linen flanking the central artwork.
- Artwork Panel: Canvas or treated wood panel with a protective matte sealer.

#### Purpose

- Positioning: A commanding hero piece for high-end master bedrooms, penthouses, or boutique luxury hotels.
- Intent: Functions as a comfortable bed and a standalone statement piece, eliminating the need for over-the-bed wall art.

### Pricing

---

INR	USD
0	0

# THE ARDEN BURL BED

## Materials and Finishes

### Metal Finishes

---

- Application: Structural metal profiles tracing the headboard seams and forming the footboard legs.
- Material: Solid Brass or PVD-coated stainless steel.
- Finish: Satin-brushed finish in a warm champagne/antique gold tone to softly diffuse light.



## **VERGE SERVING CART**

An architectural statement piece, this luxury serving trolley combines a sleek brushed stainless steel chassis with dramatic, sunburst-finish wheels. Featuring tiered matte-black shelving and high-polish chrome accents, it brings minimalist elegance and effortless mobility to high-end residential and hospitality lounges.



**MS**  
METAL SHADES



**MS**  
METAL SHADES

# VERGE SERVING CART

## Technical Information

### Details

---

#### Design Features

- Architectural Form: Bold geometric silhouette pairing clean lines with dramatic circular elements.
- Sunburst Wheels: Oversized metallic wheels with a precision-machined, light-diffusing texture.
- Tiered Storage: Open-front, multi-level curved shelving for display and easy access.
- Integrated Handle: Seamless horizontal push-bar built directly into the vertical metal chassis.
- Guard Rails: Low-profile perimeter rings to secure glassware cleanly.

#### Material Specification

- Structure: High-gauge, premium-grade stainless steel.
- Shelving: High-density panels in deep matte black.
- Trim Details: Heavy-duty chrome edge-lining.

#### Purpose

- Luxury Entertaining: Mobile statement piece for premium cocktail, wine, and spirit service.
- High-End Residential: Functional art piece for luxury living rooms, lounges, and dining spaces.
- Executive Commercial: Ideal for upscale boardrooms, VIP lounges, and boutique hotel suites.
- showrooms.

### Pricing

---

INR	USD
0	0

# VERGE SERVING CART

## Materials and Finishes

### Metal Finishes

---

- Chassis & Wheels: Radial and linear brushed steel for a refined, fingerprint-resistant texture.
- Accent Trim: High-polish mirror chrome on shelf boundaries to create a matte-versus-gloss interplay.
- Interior Core: Anti-scratch satin black powder coating on inner compartments for a durable backdrop.



**MS**  
METAL SHADES

## THE ORBIT LOUNGE SET

A striking fusion of fluid architecture and sensory contrast, designed for elite hospitality and luxury residential spaces. The set features a sculptural, mirror-polished chrome bar unit with recessed, warmly illuminated capsule display alcoves. Perfectly countering the high-shine metallic glamour, the matching ergonomic trumpet-base stools are upholstered in rich, tactile sienna velvet for a sophisticated, mid-century-modern warmth.



MS  
METAL SHADES



MS  
METAL SHADES

# THE ORBIT LOUNGE SET

## Technical Information

### Details

---

#### Design Features

- Fluid Silhouette: A continuous, sweeping curve that nests the counter and showcase together.
- Capsule Alcoves: Four recessed, pill-shaped display pods with deep bevels.
- Integrated LED: Concealed, dimmable warm lighting for a dramatic, floating glow.
- Tactile Contrast: A plush velvet bumper rail tracing the outer counter edge.

#### Material Specification

- Structure: High-gauge cold-rolled steel sheet, seamlessly welded.
- Countertop: Scratch-resistant, tempered black glass mirror.
- Stool Upholstery: Commercial-grade, stain-resistant performance velvet in Sienna Earth.
- Stool Base: Heavy tubular steel with a trumpet-flanged foot and integrated footrest.

#### Purpose

- Bespoke Hospitality: High-impact signature feature for boutique hotel lounges and VIP suites.
- Luxury Residential: Functional art piece and entertainment anchor for premium modern homes.
- Space Optimization: Curved, ergonomic footprint allows the pieces to nest naturally.

### Pricing

---

INR	USD
0	0

# THE ORBIT LOUNGE SET

## Materials and Finishes

### Metal Finishes

---

- Standard Finish: Ultra-High Mirror Polish Chrome – flawless, hand-buffed reflective plating.
- Custom Capabilities: Available upon request in Natural Burnt Copper, Satin Patina Brass, or Matte Black Powder-Coat.



## FREE-STANDING BOOKCASE

The contemporary shelving system is crafted with supporting side panels in 12mm extra-light transparent tempered glass. The brass shelves are enhanced with bright turned and knurled detailing, creating a refined contrast between glass and metal. Designed with precision and elegance, this shelving system functions as a sophisticated storage solution while also serving as a striking architectural accent for premium interior spaces.

# FREE-STANDING BOOKCASE

## Technical Information

### Details

---

#### Design Feature

- Vertical glass-panel book display system
- Floating angled shelves creating dynamic visual composition
- Transparent structure giving a light, minimal appearance
- Modular alignment allowing flexible arrangement

#### Material Specification

- Panels: toughened safety glass (10–12 mm typical)
- Shelves: laminated wood or engineered board with coating
- Supports: stainless steel or aluminum brackets and rods
- Fixing: concealed floor and top rail mounting system

#### Purpose

- Functional book display and storage unit
- Acts as a decorative interior feature wall
- Maximizes visual openness while organizing books
- Ideal for libraries, lounges, or modern residential interiors

### Pricing

---

INR	USD
0	0

# FREE-STANDING BOOKCASE

## Materials and Finishes

### Metal Finishes

---

- Clear tempered glass panels with polished edges
- Light-toned matte shelves with smooth lacquer finish
- Satin metal rods and connectors for a refined modern look

# MS

## METAL SHADES

### METAL EXPERT

---

**WE DON'T MAKE PRODUCTS.  
WE MAKE STATEMENTS.**

---

Thank you for exploring our collection.

We would love to be a part of your journey in creating something extra ordinary for your spaces

---

**LET'S CREATE SOMETHING EXTRAORDINARY**



[+91 9990029892](tel:+919990029892)



[@metalshades](https://www.instagram.com/metalshades)



[Khasra no. 250 Near Fatima church, Jasola,  
New Delhi-110025, India](#)



[metalshadez@gmail.com](mailto:metalshadez@gmail.com)



<https://metalshades.in/>